



The world's hottest chilli is also
one of the smallest.

Presenting L&T Emerging Opportunities Fund - Series I

NFO Opens January 29, 2018

NFO Closes February 12, 2018

call 1800 2000 400
www.ltfs.com



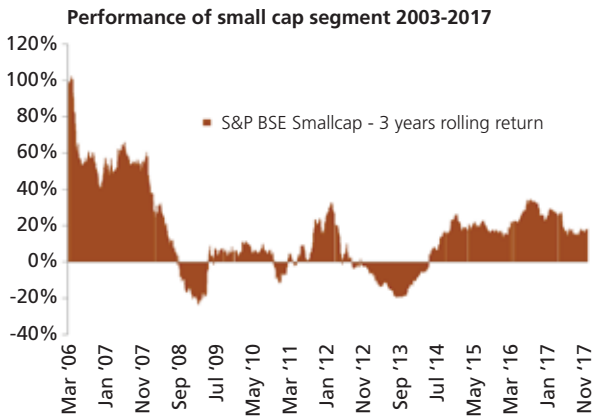
L&T Financial Services
Mutual Fund

What are emerging opportunities?

Smaller companies which are in a relatively early stage of growth phase, typically offer higher long-term growth potential compared to their established larger counterparts. The most often overlooked, under researched and under owned companies in the stock market lie within this space. Some of these emerging companies comprise of stocks with sound fundamentals and therefore create considerable potential for long-term wealth creation.

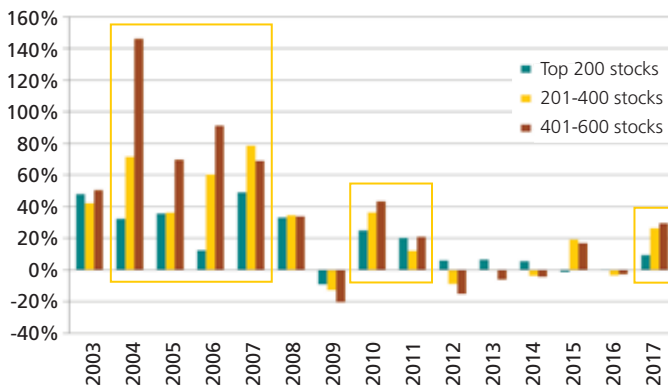
Why consider investing in emerging opportunities now?

- The small cap rally is likely to be predominantly driven by earnings/economic growth



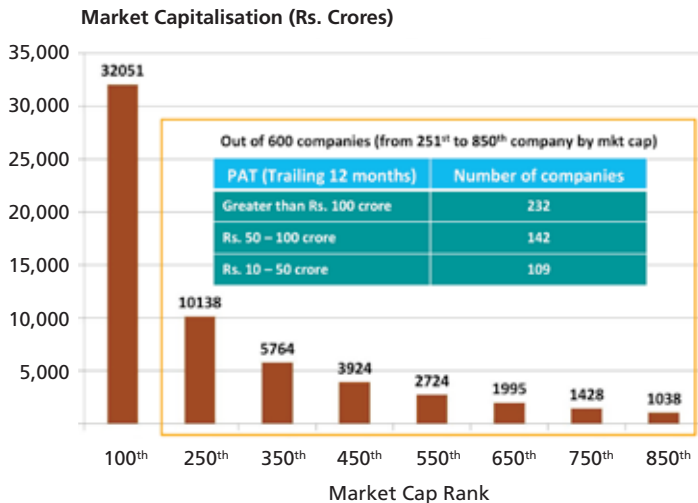
- Historically, small caps tend to post higher profit growth rate, whenever there is an economic recovery in the domestic market
- Indian economy is showing early signs of recovery, backed by policy reforms and various other initiatives

YoY earnings growth for companies across different market cap segments



Source: Ace Equity, LTMF. Based on aggregate earnings growth for each of the financial year. Market cap ranking of Top 200, 201-400 and 401-600 is based on market capitalization at the end of respective financial year.

- Political Stability – A favourable scenario for medium to long-term economic growth
- Within the small cap universe, there are a large number of stocks available at reasonable valuation levels while some reflect higher valuations
- Opportunity for bottom-up stock picking as there are a lot of smaller companies which are profitable and exhibiting growth potential as illustrated below



Source: Bloomberg. TTM PAT numbers are as on Q2 2017. Market cap numbers are as on December 29, 2017.

Why invest in L&T Emerging Opportunities Fund - Series I?

The L&T Emerging Opportunities Fund - Series I aims to offer upside potential over the long term by investing in small cap stocks with an adequate margin of safety. Bottom-up research and our proprietary GEM investment approach will help us pick the right stocks that could reflect this potential for growth.

Key Benefits

- Opportunity to benefit from growth potential of small cap companies
- Aims to deliver higher alpha from a long-term perspective
- Adds style diversification to the investor's portfolio
- The close-ended structure allows the fund manager to take positions in stocks which have the potential to outperform over the medium term
- A close-ended structure also helps in effectively managing the portfolio liquidity which is extremely critical in the small cap space

Fund Facts

Objective	The investment objective of the scheme is to provide capital appreciation by primarily investing in equity and equity related instruments of small cap companies.	
Options	Dividend Payout and Dividend Sweep (dividend declared under this option will have the facility to switch out the entire dividend amount to any other scheme of L&T Mutual Fund, as opted by the investor at the time of NFO)	
Lump sum	Minimum application amount	₹5,000 per application and in multiples of ₹1 thereafter
Fund manager	Vihang Naik	
Benchmark	S&P BSE Small Cap Index	
Plans Available	Regular and Direct	

Why invest with L&T Mutual Fund?

- The aim of L&T Mutual Fund is to create prosperity for all stakeholders by delivering consistent long-term investment performance, product innovation and quality service
- Our commitment to answering different customer needs has resulted in a range of funds that span asset classes, risk profiles, time horizons and geographies
- We build our investments on a foundation of in-depth research and fundamental analysis. **GEM**, our proprietary investment process comprises three rigorous steps - **G**eneration of ideas, **E**valuation of companies and **M**anufacturing and monitoring of portfolios
- With over 19,00,000 customer accounts across 375 cities and towns and close to ₹58,000 crores in managed assets³, we remain dedicated to building our customers' futures

call 1800 2000 400
www.ltfs.com



¹Average assets. Data for the quarter ended December 31, 2017.

This product is suitable for investors who are seeking*

- Long-term capital appreciation
- Investment in a basket of equity and equity-related instruments, investing predominantly in the small cap stocks

*Investors should consult their financial advisers if in doubt about whether the product is suitable for them.



Investors understand that their principal will be at high risk

Mutual Fund investments are subject to market risks, read all scheme related documents carefully.

CL05131